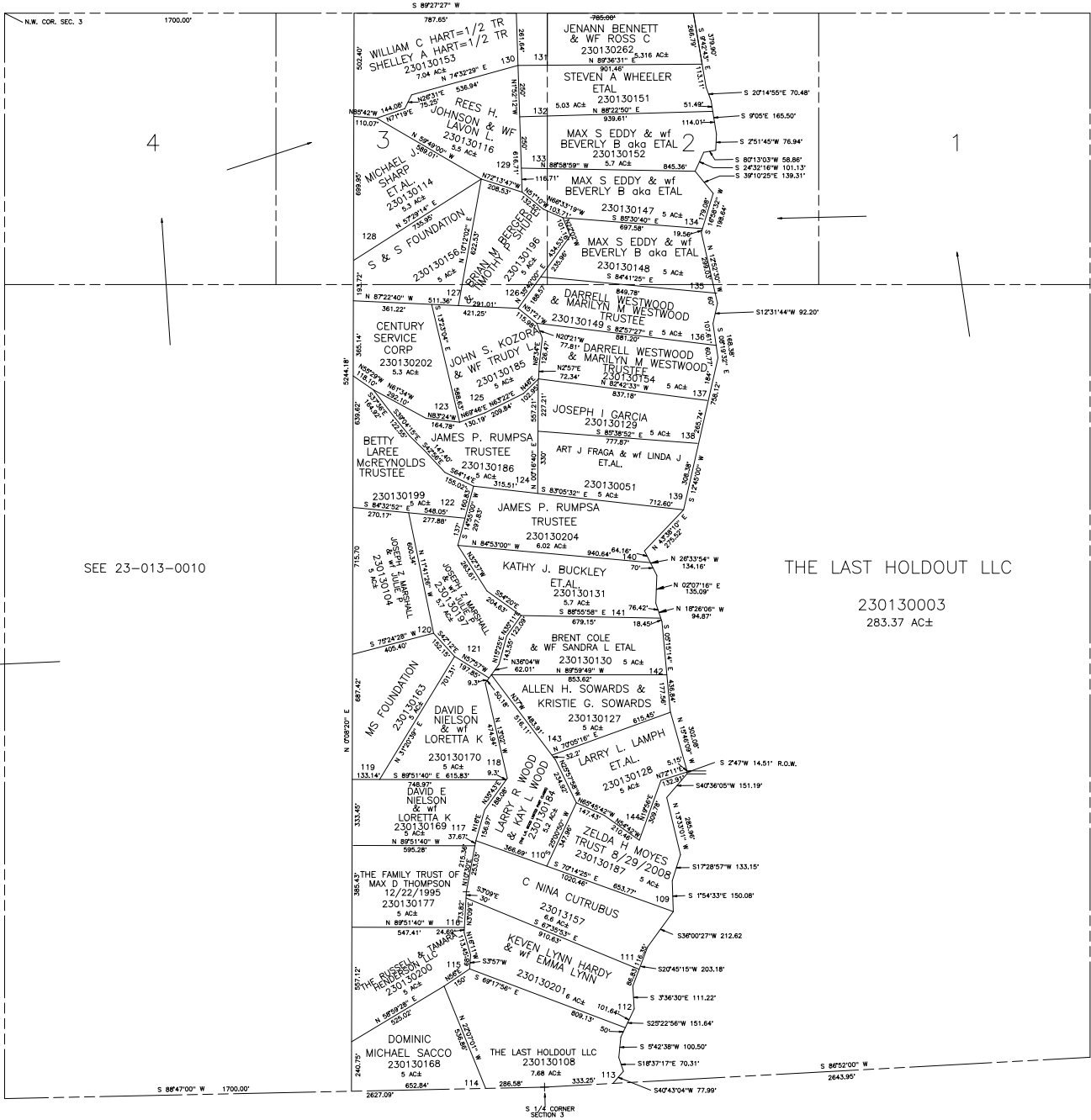


SECTION 3, T.7N., R.3E., S.L.B. & M.

IN WEBER COUNTY  
SCALE 1" = 400'

TAXING UNIT: 58

SEE PAGE 46-1



SEE PAGE 13

SEE 23-013-0010

THE LAST HOLDOUT LLC

230130003  
283.37 AC±

SEE PAGE 13

SEE PAGE 13-3